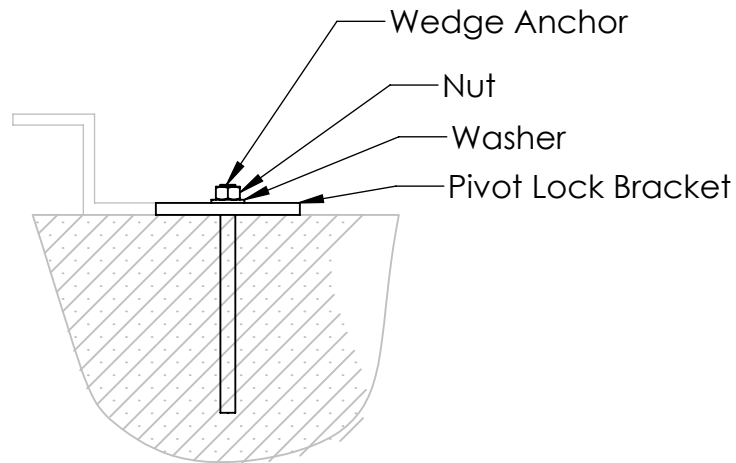
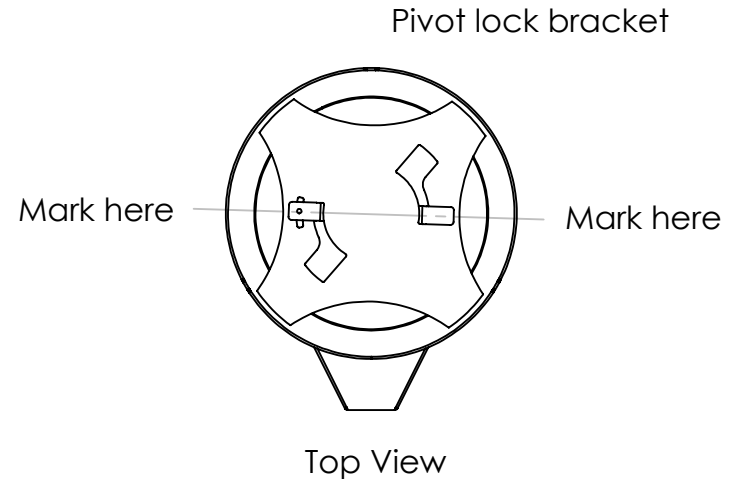


## Installation Instructions

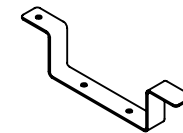
Disclaimer: Premier Site Furniture recommends mounting receptacle on a concrete or asphalt pad to ensure safety.

Required: Two 3/8" x 4" wedge anchors, nuts, and washers

1. With the pivot lock bracket engaged, place receptacle with desired orientation and location. Mark the orientation of the pivot lock bracket on the concrete.
2. Remove pivot lock bracket and place between marks.
3. Mark the location of the mounting holes on the concrete.
4. Install wedge anchors per the anchor manufacturer's installation instructions.
5. Place the receptacle over the pivot lock bracket and twist into place.
6. Drop 5/16" bolt into hole on pivot lock bracket.



Mounting Detail



Pivot lock bracket

PROPRIETARY AND CONFIDENTIAL  
THE INFORMATION CONTAINED IN THIS  
DRAWING IS THE SOLE PROPERTY OF  
PREMIER POWDER COATING. ANY  
REPRODUCTION IN PART OR AS A WHOLE  
WITHOUT THE WRITTEN PERMISSION OF  
PREMIER POWDER COATING IS  
PROHIBITED.

DIMENSIONS ARE IN INCHES  
TOLERANCES:  
FRACTIONAL ±  
ANGULAR: MACH ± BEND ±  
TWO PLACE DECIMAL ±  
THREE PLACE DECIMAL ±



TITLE:

Premier Receptacle

MATERIAL	SIZE	DWG. NO.	REV
TONY FOSTER	A	B132	
2/20/2017	SCALE: 1:16	WEIGHT:	SHEET 1